

Model Number KQSN-X

Single-stage double-suction centrifugal pump

1. Efficient, reliable, energy-saving and environmentally friendly

- I. Integrating hydraulic, material, and structural design to ensure product reliability and efficiency.
- II. The perfect match between impeller and shell, high efficiency, wide high-efficiency zone, and high operating efficiency.
- III. Reasonable balance between cavitation performance and efficiency indicators, energy-saving and environmentally friendly operation.

2. Intelligent interconnection, winning the future with intelligence

- I. Reserve multiple sensor installation interfaces, several of which can be connected to the cloud monitoring platform and can be used online
- II. Monitor the status of long-distance travel, receive early warnings, and achieve intelligent remote maintenance.



Product Overview

The KQSN-X single-stage double suction centrifugal pump is an upgraded product that combines the company's advanced hydraulic model research results, structural reliability upgrades, universality, and configuration optimization.

This series of products fully adopts excellent hydraulic models, while optimizing the overall structure to improve the reliability and overall performance of remote rotation. Good rotor rigidity and moment of inertia Small, small starting current has little impact on the power grid; Optimization of external dimensions, small storage capacity of the foundation and saving installation space; The disassembly and assembly structure of bearing components is convenient for on-site maintenance, avoiding excessive damage. Heating caused bearing damage, resulting in unstable pump operation. The performance of this series of products is planned based on the parameters of market demand over the years, and is matched with multiple shell and impeller models, More suitable for various on-site parameter requirements, ensuring efficient and reliable operation.

application area

Water supply systems for water plants, circulating water systems for power plants and industrial production, irrigation and drainage restriction station systems, building water supply systems, heating and cooling systems, and other pipelines are missing transportation.

Transport medium

Tap water from water plants, industrial water, river water, fire water, heating hot water, etc.

Technical parameter

Caliber: DN150-DN1400mm, The flange complies with GBT17241.8 standard (special customization is available)

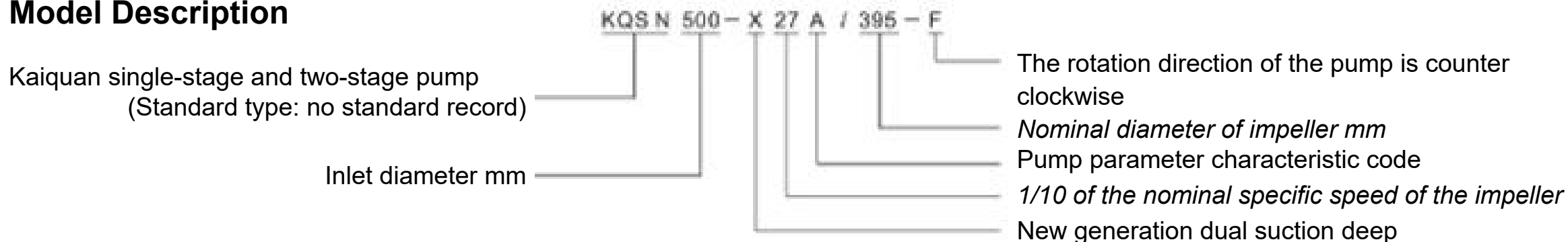
Speed: 7409901480 and 2960r/mln (corresponding to different speeds according to the model).

Flow rate: 65-13600m/h Lift: 9-320m

Attention:

1. Regarding the cavitation allowance of the device, it is necessary to consider the cumulative effects of local altitude (atmospheric pressure) and medium saturation (saturated vapor pressure).
2. The selection of motor power for use should take into account the influence of local altitude factors (especially when greater than 1000 meters).

Model Description



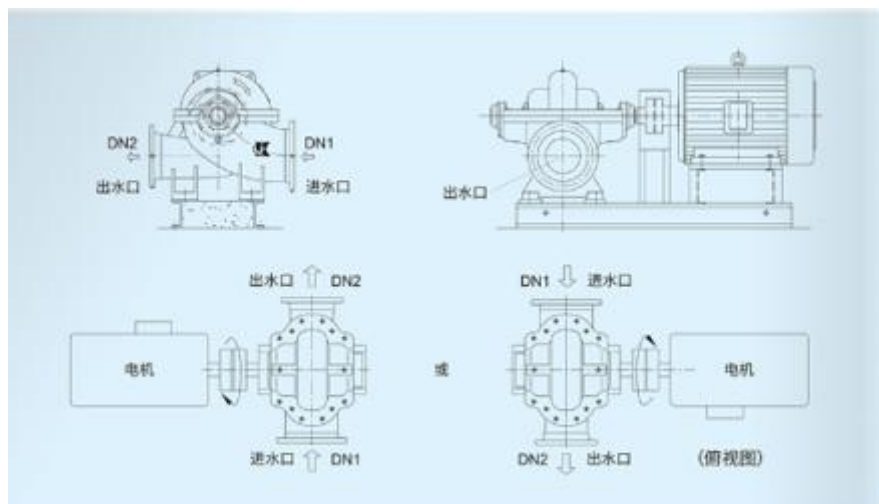
Performance and Reliability upgrade:

1. Optimization of impeller, suction chamber, and pressurized water chamber wet cycle for higher efficiency.
2. The positioning of the impeller shoulder and the reasonable design of the rotor result in directional axial force, making the operation more stable and reliable.
3. The weight of the rotor is reduced, the moment of inertia is small, the starting current is small, and the impact on the power grid is small.

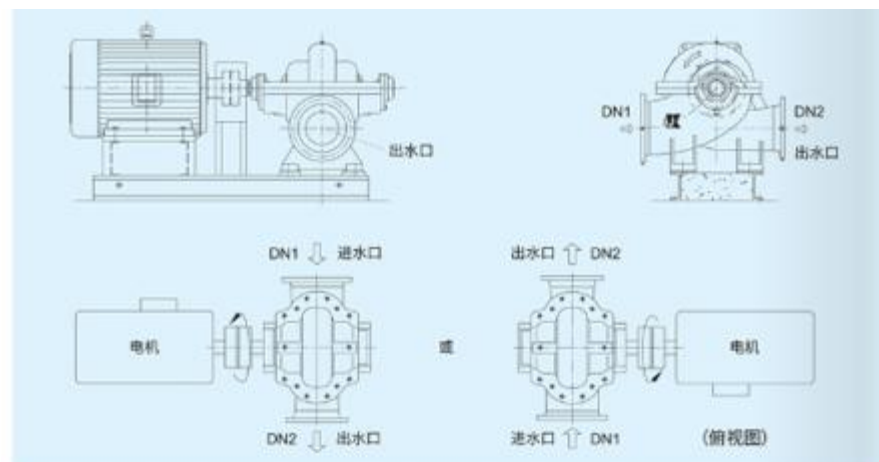
Rotation direction determination

Determination of pump rotation direction

Standard type (from the perspective of the meat pump at the transmission end, the rotation direction of the pump is clockwise acid rotation).



F special type, when viewed from the transmission end towards the pump, the required rotation direction is clockwise control.

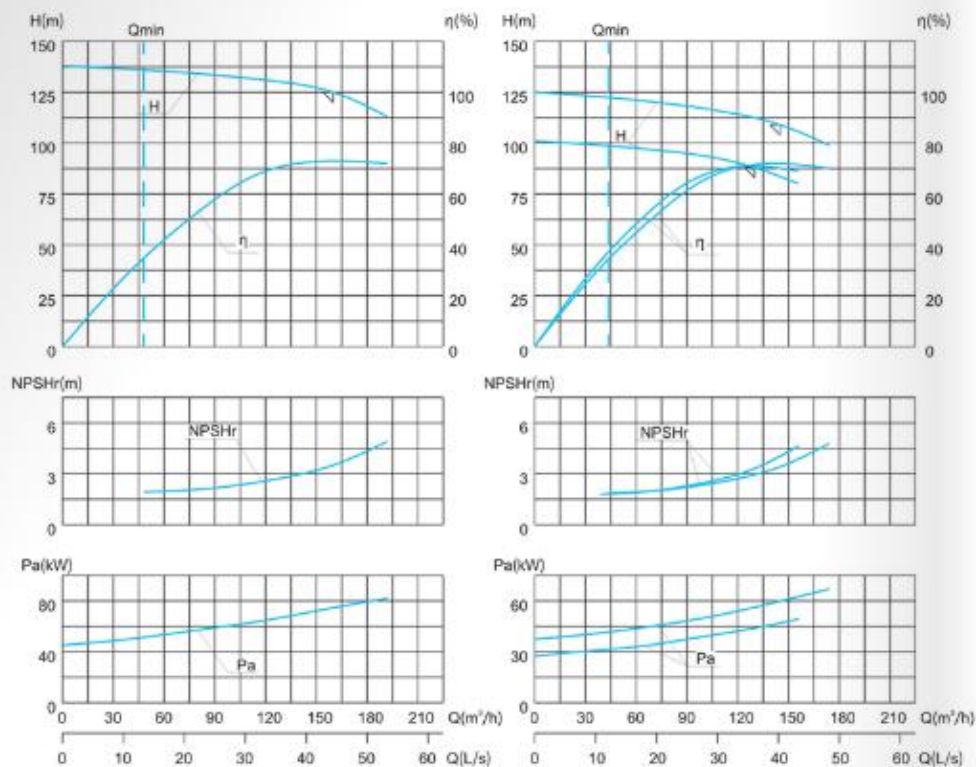


Main component material selection table

零件名称	材料牌号及组合					
	A	B	C	D	E	F
泵体	HT250	QT450-10 QT500-7	ZG230-450 ZG270-500	12%铬钢	奥氏体 不锈钢	2205/2507
泵盖	HT250	QT450-10 QT500-7	ZG230-450 ZG270-500	12%铬钢	奥氏体 不锈钢	2205/2507
叶轮	HT250 ZG230-450 ZG20Cr13	QT500-7 QT600-3 ZG20Cr13	ZG270-500 ZG20Cr13	12%铬钢	奥氏体 不锈钢	2205/2507
轴	40Cr	2205	2205	2205	2205	2205
密封环	HT200 HT250/ ZCuSn10P1	QT450-10 QT500-7 HT250/HT200 ZCSn10P1u	QT500-7 HT250/HT200 ZCSn10P1u	12%铬钢	ZCuSn10P1 奥氏体不锈钢	316L/317L
填料轴套	20Cr13	QT500-7 HT250 20Cr13	QT500-7 HT250 20Cr13	20Cr13	奥氏体 不锈钢	316L/317L
喉部衬套	HT200/ HT250	QT450-10 HT250 HT200	QT600-3 HT250 HT200	12%铬钢	ZCuSn10P1 奥氏体不锈钢	316L/317L
叶轮螺母	45/20Cr13	45/20Cr13	45/20Cr13	20Cr13	奥氏体 不锈钢	2205
机封压盖	HT200 HT250	HT250	Q235/HT250	ZG230-450 Q235	304	2205
填料压盖	HT200 HT250	HT250	Q235/HT250	ZG230-450 Q235	304	2205
键	45	45	45	20Cr13	12Cr13 20Cr13	硬面处理的 双相钢
机封定位套	20Cr13	20Cr13	20Cr13	20Cr13	0Cr17Ni4Cu4Nb 20Cr13	2205

注:材料组合A为标准产品配置,特殊介质时过流件材料需根据情况合理选配。

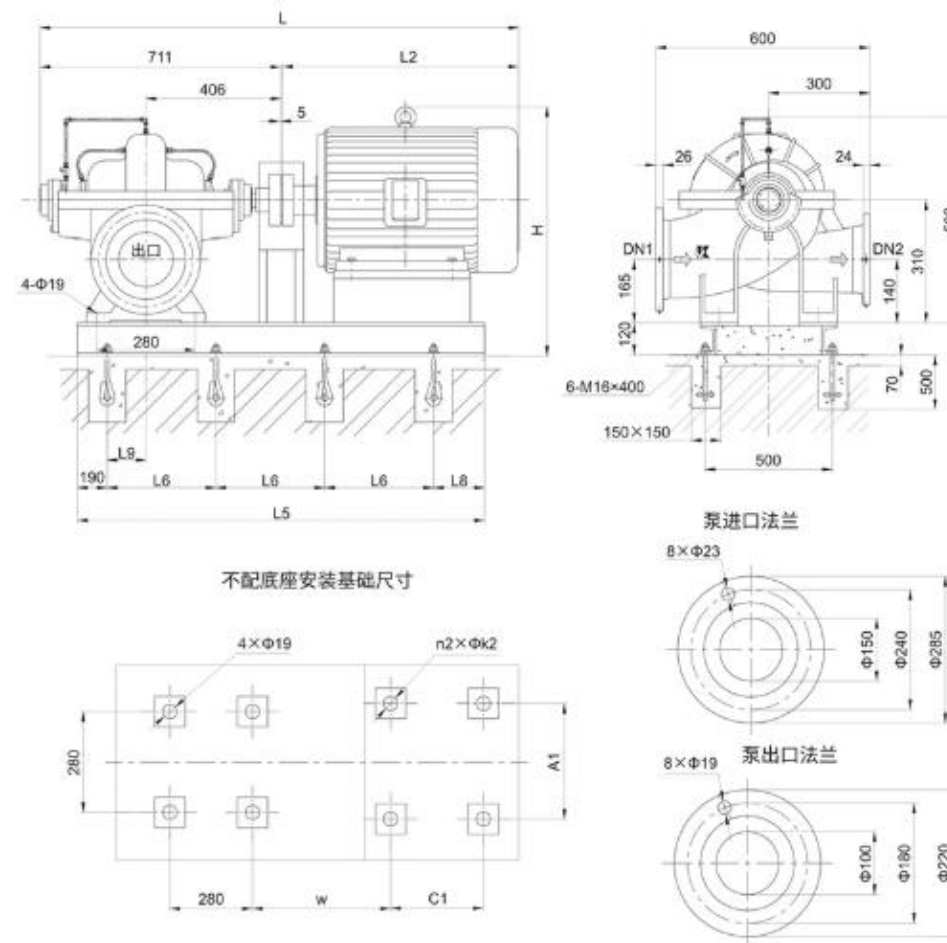
Technical parameters and performance curve of KQSN150-X4A pump



KQSN150-X4A/300型泵性能曲线

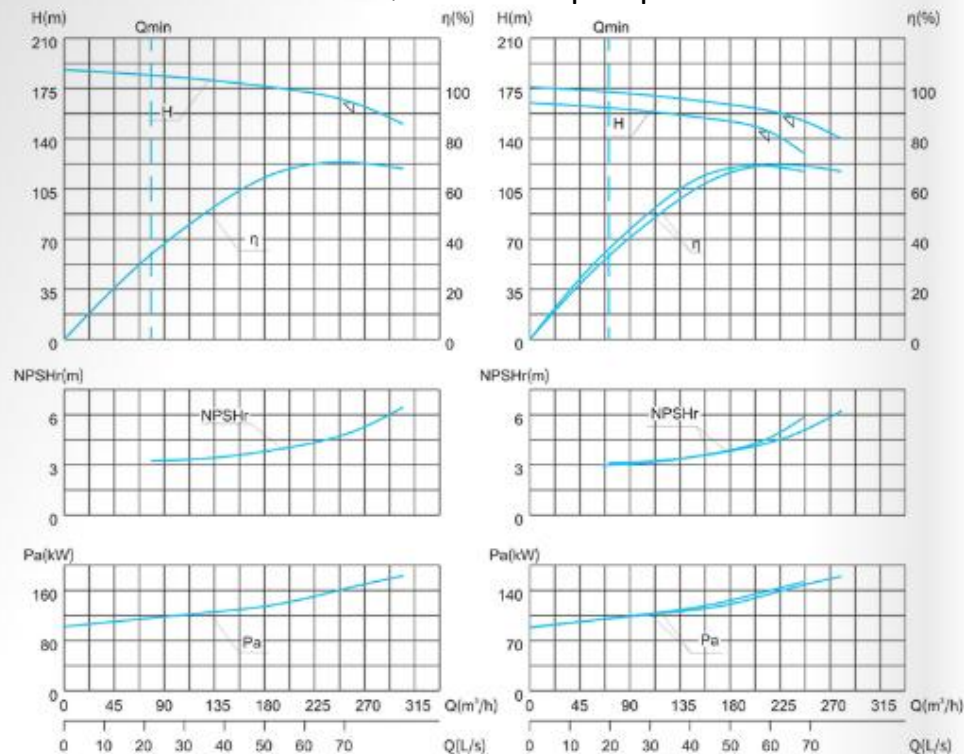
KQSN150-X4A/290、280型泵性能曲线

泵型号 Pump type	流量Capacity		扬程 Head (m)	转速 Speed (r/min)	功率(kW)		效率 Efficiency %	NPSHr (m)	泵重 (kg)
	(m³/h)	(L/s)			轴功率 Shaft Power	电机功率 Motor Power			
KQSN150-X4A/300	120	33.3	131	2960	62.0	90	69	3.5	170
	160	44.4	125		74.6		73		
	192	53.3	113		82.1		72		
KQSN150-X4A/290	108	30.0	116	2960	50.5	75	68	3.4	169
	145	40.3	109		59.8		72		
	174	48.3	99		67.0		70		
KQSN150-X4A/280	98	27.2	94	2960	37.6	55	67	3.3	168
	130	36.1	89		44.5		71		
	156	43.3	81		49.9		69		



泵型号	电动机				尺寸mm													重量(kg)
	型号	电压(V)	防护等级	功率(kW)	L	L2	L5	L8	L9	H	W	C1	n2	k2	A1	电机	底座	
KQSN150-X4A/300	YE2-280M-2	380	IP55	90	1736	1020	1450	536	190	0	790	601	419	4	24	457	540	190
KQSN150-X4A/290	YE2-280S-2	380	IP55	75	1686	970	1400	510	190	0	790	601	368	4	24	457	510	190
KQSN150-X4A/280	YE2-250M-2	380	IP55	55	1631	915	1320	470	190	0	795	579	349	4	24	406	415	180

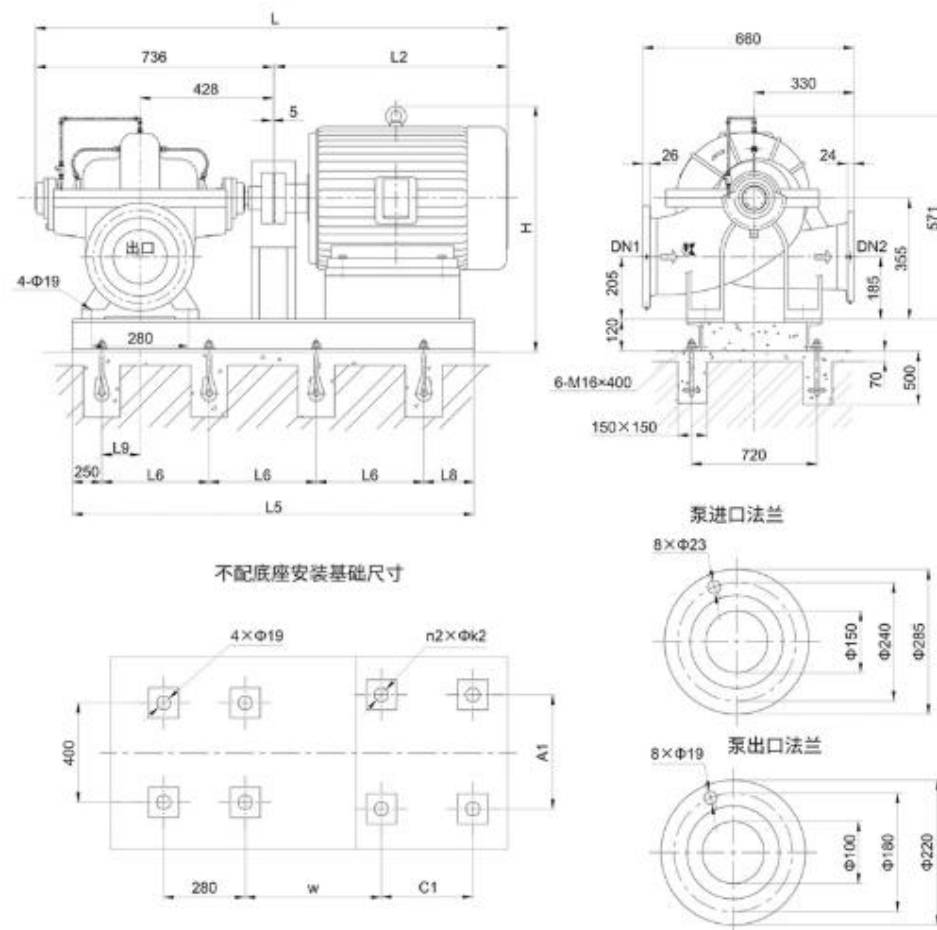
Technical parameters and performance curve of KQSN150-X4B pump



KQSN150-X4B/330型泵性能曲线

KQSN150-X4B/320, 310型泵性能曲线

泵型号 Pump type	流量Capacity		扬程 Head (m)	转速 Speed (r/min)	功率(kW)		效率 Efficiency %	NPSHr (m)	泵重 (kg)
	(m³/h)	(L/s)			轴功率 Shaft Power	电机功率 Motor Power			
KQSN150-X4B/330	195	54.2	175	2980	138.7	185	67	5	240
	260	72.2	165		165.7		70.5		
	305	84.7	150		183.2		68		
KQSN150-X4B/320	177	49.2	165	2980	120.7	160	66	4.8	240
	237	65.8	155		144.1		69.5		
	280	77.8	140		159.3		67		
KQSN150-X4B/310	161	44.7	154	2980	103.0	132	66	4.6	240
	215	59.7	146		123.9		69		
	246	68.3	130		130.0		67		



泵型号	电动机				尺寸 mm														重量(kg)	
	型号	电压 (V)	防护等级	功率 (kW)	L	L2	L5	L6	L8	L9	H	W	C1	n2	k2	A1	电机	底座		
KQSN150-X4B/330	YE2-315L2-2	380	IP55	185	1951	1210	1740	650	190	0	1005	649	508	4	28	508	1060	210		
KQSN150-X4B/320	YE2-315L1-2	380	IP55	160	1951	1210	1740	650	190	0	1005	649	508	4	28	508	1060	210		
KQSN150-X4B/310	YE2-315M-2	380	IP55	132	1951	1210	1700	630	190	0	1005	649	457	4	28	508	1060	210		



KQSN 单级双吸离心泵

宽高效低汽蚀设计、整体结构优化、结构稳定性好、通用化程度高

KQSN single-stage double suction centrifugal pump

Wide, efficient, low cavitation design, overall structural optimization,
good structural stability, high degree of universality



WQ 潜水排污泵

无过载水力设计、通用化设计、可靠性高、配置高

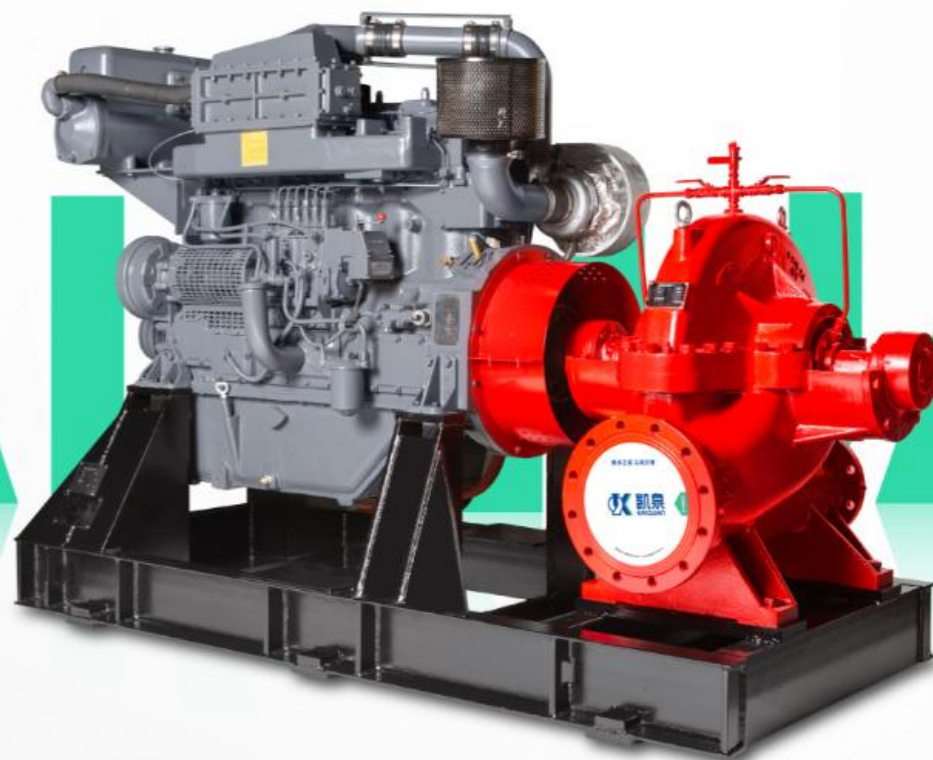
WQ submersible sewage pump



WL 干式排污泵

干式泵房安装，检修方便/结构设计合理，泵可靠性强
独特双通道叶轮，通过能力强/可配备电控柜和液位浮球开关

WL dry sewage pump



XBC 柴油机消防泵

保护功能全、可靠性强、自动化程度高、设备选用灵活

可选用各种品牌柴油机与本公司生产的双吸泵、卧式多级泵配套，实现流量及扬程的灵活组合

XBC diesel engine fire pump



KQDQ 系列轻型立式多级离心泵

高效节能、绿色环保/结构紧凑、安全可靠/经久耐用、维护方便/精密制造、质量为先

Efficient and energy-saving,
green and environmentally
friendly/compact structure,
safe and reliable/durable,
easy to maintain/precision
manufacturing, quality first

KQDQ series lightweight vertical multi-stage centrifugal pump

More products are being launched, welcome to customize products by writing to us.

contacts:Paul Rocke
paul@epitsh.com